



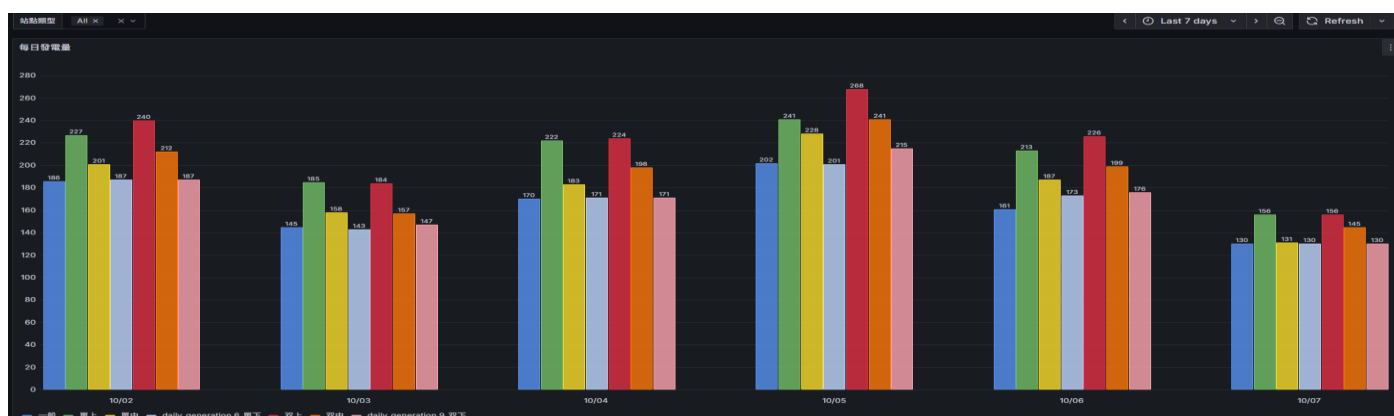
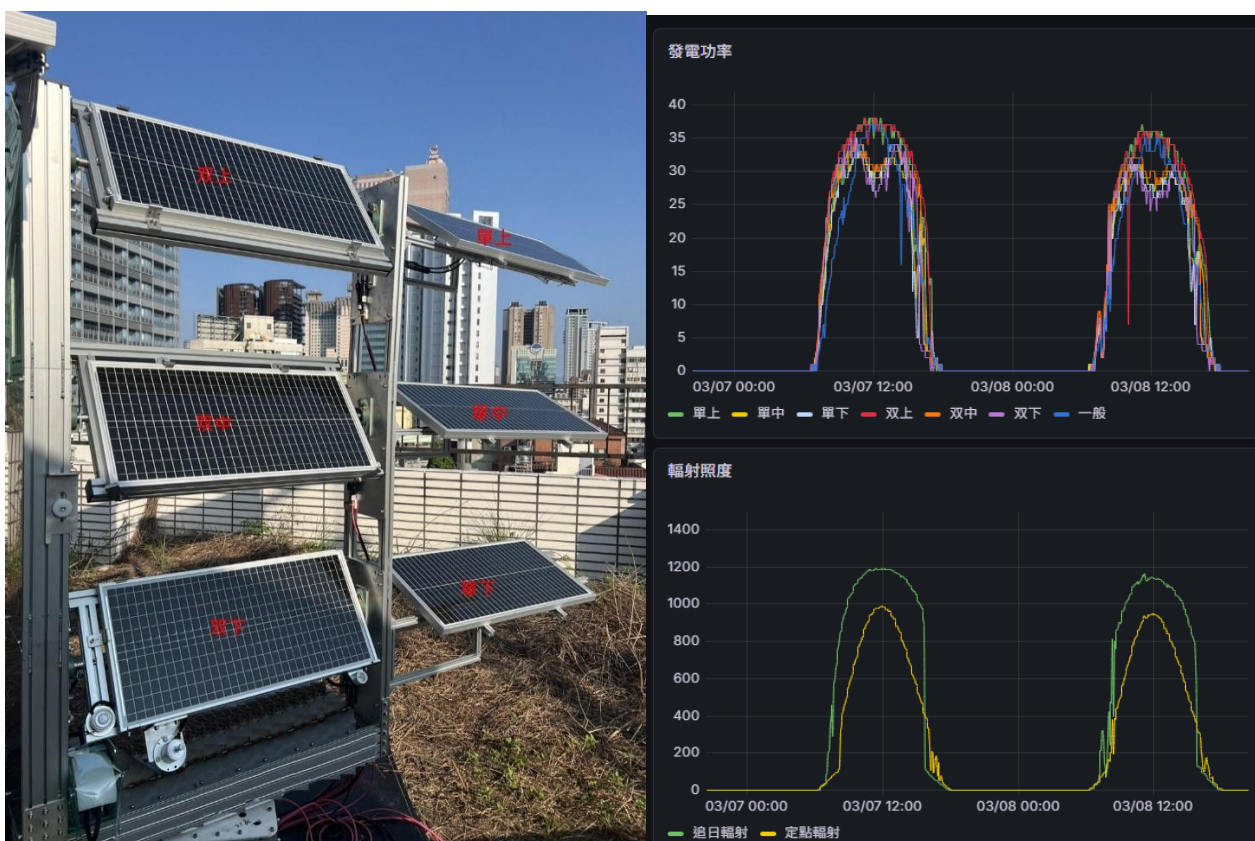
Multi-Layer Sun-Tracking Solar System

Multi-Layer Sun-Tracking Solar Power Generation System

Functional feature description:

The sun-chasing stacked solar power generation system combines "multi-layer multiplier gain" and "active sun-chasing mechanism", which is currently the technology combination with the highest solar power production per unit area. It is characterized by using multi-layer solar vertical stacking to synchronously generate electricity, with a dual-axis (circumference and elevation) or single-axis (peripheral) sun-tracking system, so that the battery module is always facing the sun, increasing the power generation by 25% to more than 30% compared to the fixed system, or even doubling the power generation with each additional layer.

Grid diagram of stacked solar panels and general stationary solar panels



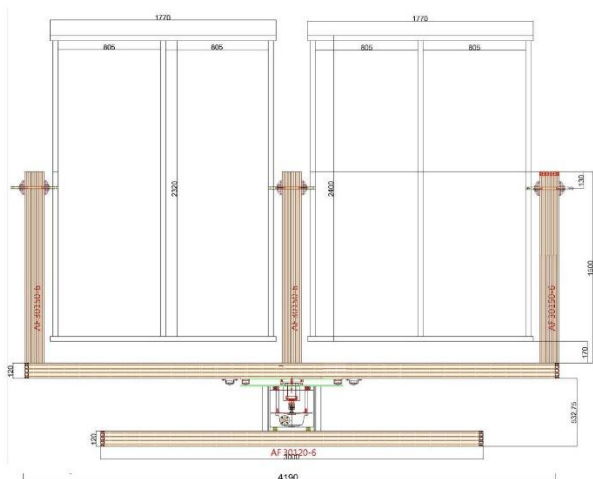


Multi-Layer Sun-Tracking Solar System

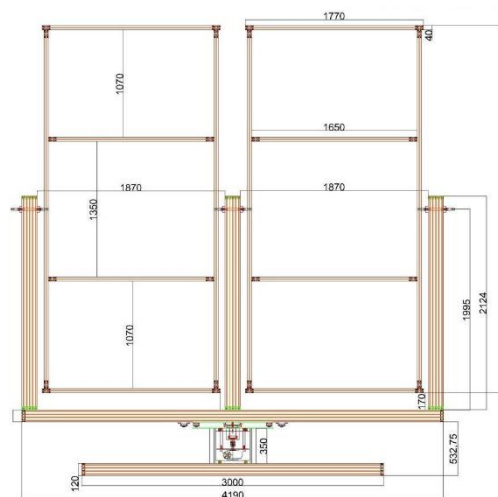
Applications:

High-value commercial ground power plants, solar farms, fish ponds, large-scale utility projects, and rooftop applications that require ultimate efficiency.

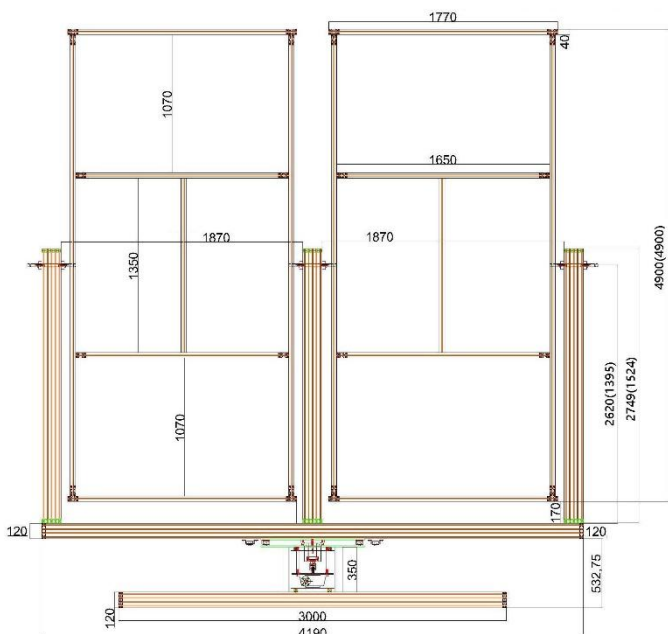
Dimensions:



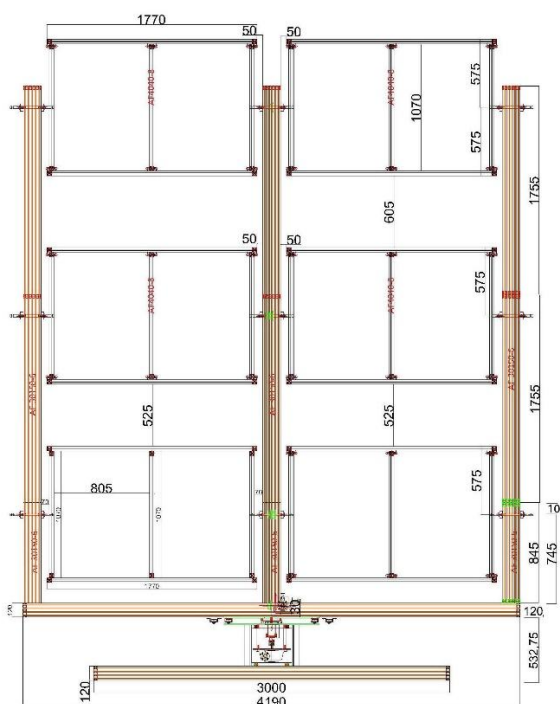
L x W x H = 4200 x 2000 x 3223
型號: 1AT-122-1800W



L x W x H = 4200 x 3161 x 4473 (3561)
型號: 1AT-123-2700W



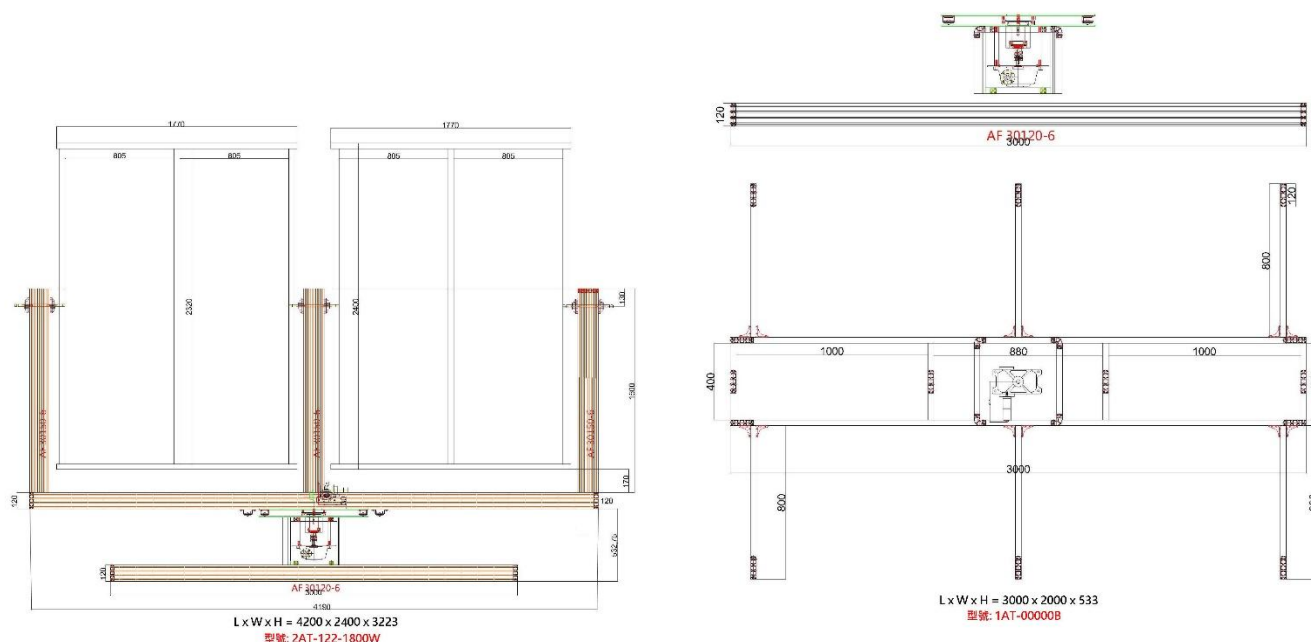
LxWxH = 4200 x 4200 x 4498 (4200 x 4200 x 3273)
型號: 1AT-124-3600W (Tilt 30 Degrees)



L x W x H = 4200 x 2000 x 5483
型號: 2AT-321-2700W



Multi-Layer Sun-Tracking Solar System



Product model coding principle description:

2 A T - 1 2 2 - 1800 W

No. of axes(Azimuth :1) Axis Tracking Layer No. Column No. Row No. Power Watt
(Azimuth + Altitude : 2)

Technical Data:

Model	1AT-122-1800W	1AT-123-2700W	1AT-124-3600W	2AT-321-2700W	2AT-122-1800W	1AT-000-Base
No. of Axes	1	1	1	2	2	1
No. of stacks	1	1	1	3	1	NA
Columns per Layer	2	2	2	2	2	NA
Rows per layer	2	3	4	1	2	NA
Total Power	1,800 W	2,700W	3,600W	2,700W	1,800W	NA
Consumption	< 60W / Day	< 60W / Day	< 60W / Day	< 60W / Day	< 60W / Day	< 60W / Day
Power supply +Battery	35W / 300W	35W / 300W	35W / 300W	35W / 300W	35W / 300W	35W / 300W
Azimuth Rang	360°	360°	360°	360°	360°	360°
Altitude Rang	Fixed	Fixed	Fixed	0° - 90°	0° - 90°	NA
Angular Resolution	0.1°	0.1°	0.1°	0.1°	0.1°	0.1°
Operating Temperature	-15 ~ 50° C	-15 ~ 50° C	-15 ~ 50° C	-15 ~ 50° C	-15 ~ 50° C	-15 ~ 50° C
Material	Metal	Metal	Metal	Metal	Metal	Metal
Dimensions	4200x2000x3223	4200x3161x3561	4200x4200x3273	4200x2000x5483	4200x2400x3223	4200x2000x533